

Our **Blue** exhibition in Launceston, Tasmania.

The Contemporary Division exhibition for 2008 was held in the Blue Café, Restaurant and Bar, Inveresk just behind the main APSCON venue.

A colour version of the catalogue can be seen on this website. Apply to Kay Mack for a photocopied hard copy version in black & white if you would like one. Kay's email address kmack@a-p-s.org.au



photo by John Mack

The café is in the lower half of this building. It's a busy place and was an ideal venue for the exhibition, the 14 works from 11 exhibitors fitting beautifully into the space.

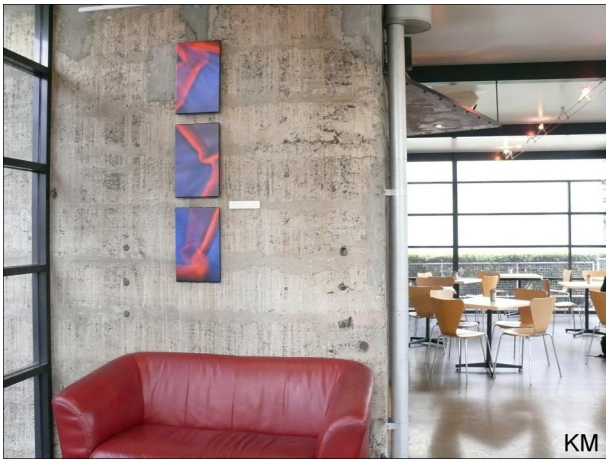


photo by Brian Rope

L-R: Anne O'Connor, Troy Ruffels, Kay Mack.

The exhibition was opened on Friday evening 19 September by Dr Troy Ruffels, Head of Photomedia at the University of Tasmania in Inveresk. About 50 friends shared a meal in the Blue café after the official part of the opening.

The following images were taken by Kay Mack, John Mack & Brian Rope early in the day before the crowds arrived. They give an impression of the café with our works on the walls.



KM



KM



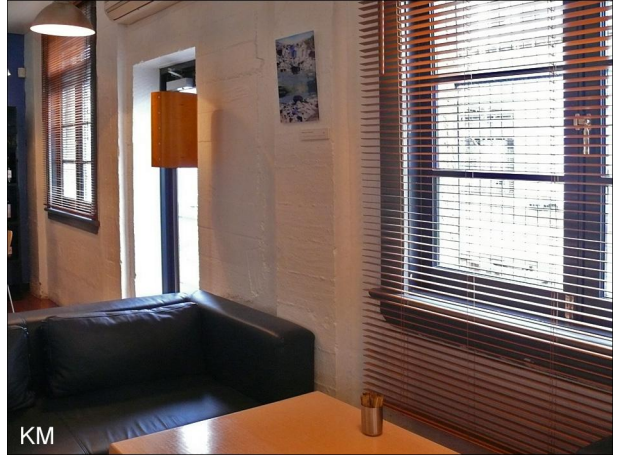
KM



BR



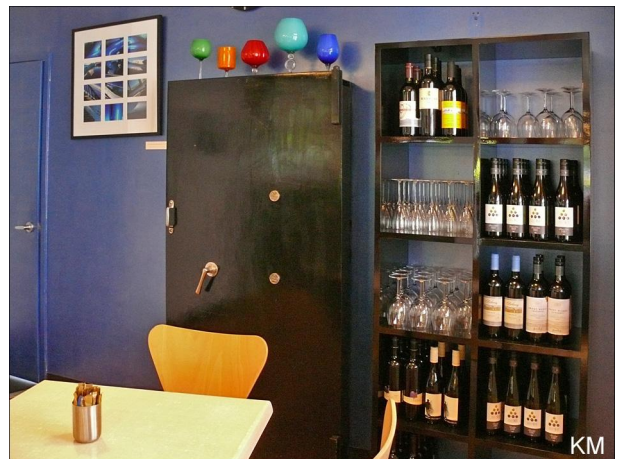
KM



KM



JM



KM